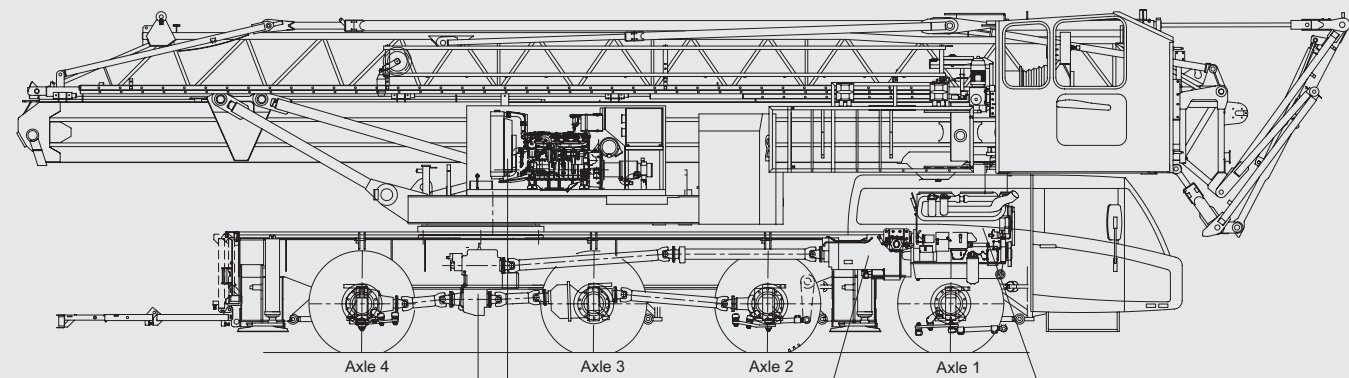
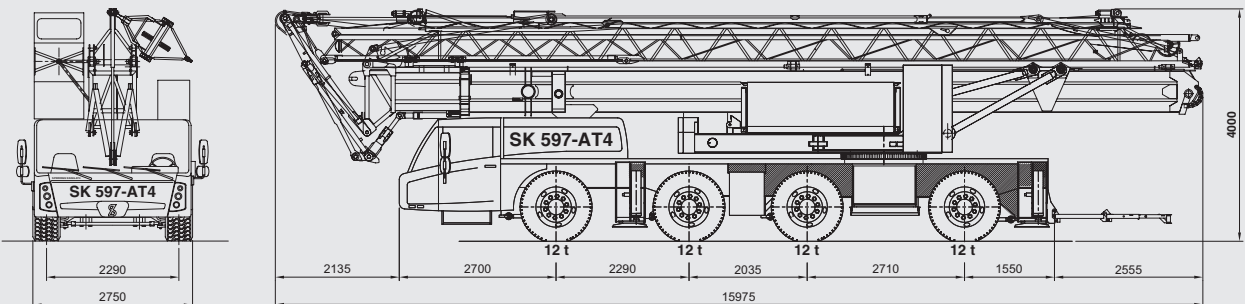
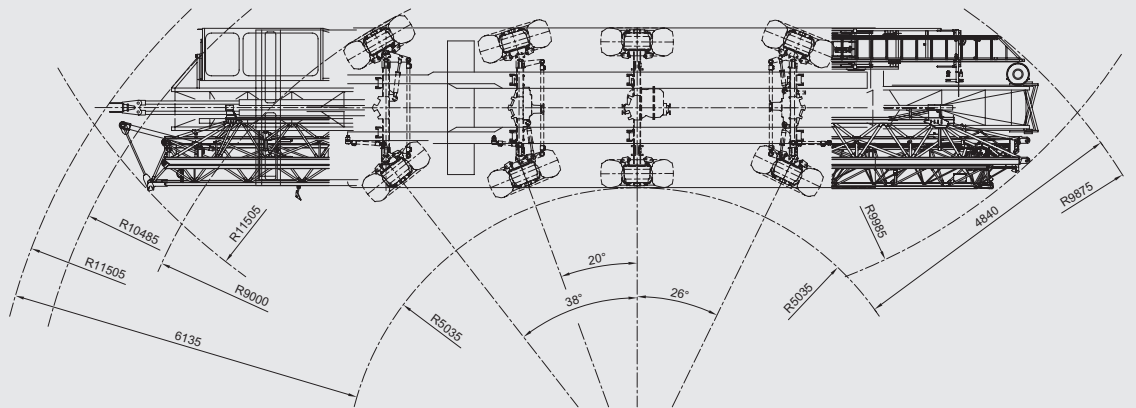


55
50
45
40
35
30
25
20
15
10
5
0



Transfer box: STEYR VG2001/396 Road gear i=0,89 Off road gear i=1,54	Crane diesel engine: John Deere: 4045HFG82 Constant speed Power: 103 kW (1500 rpm) Torque: 656 Nm (1500 rpm)	Gearbox: ZF 12AS2531 SO Automatic Dry plate clutch + interarder	Carrier diesel engine: Euro VI DAF: MX11-291 (10,8 ltr) Power: 291 kW (1700 rpm) Torque: 1900 Nm (1000-1400 rpm)
---	--	---	--

Axle 1 : Steer axle	Tyres : 445/75 R22.5
Axle 2 : Steer drive axle (end reduction i=7,29)	Suspension : Hydro-pneumatic on all axles
Axle 3 : Non steered drive axle (end reduction i=7,29)	Stroke suspension cylinder : 247 mm
Axle 4 : Steer drive axle (end reduction i=7,29)	Max. speed carrier : 83 km/h
Kessler-axes with disc brakes	Min. speed carrier (engine at 1000 rpm) : 1,6 km/h
	Overall weight : 48.000 kg.

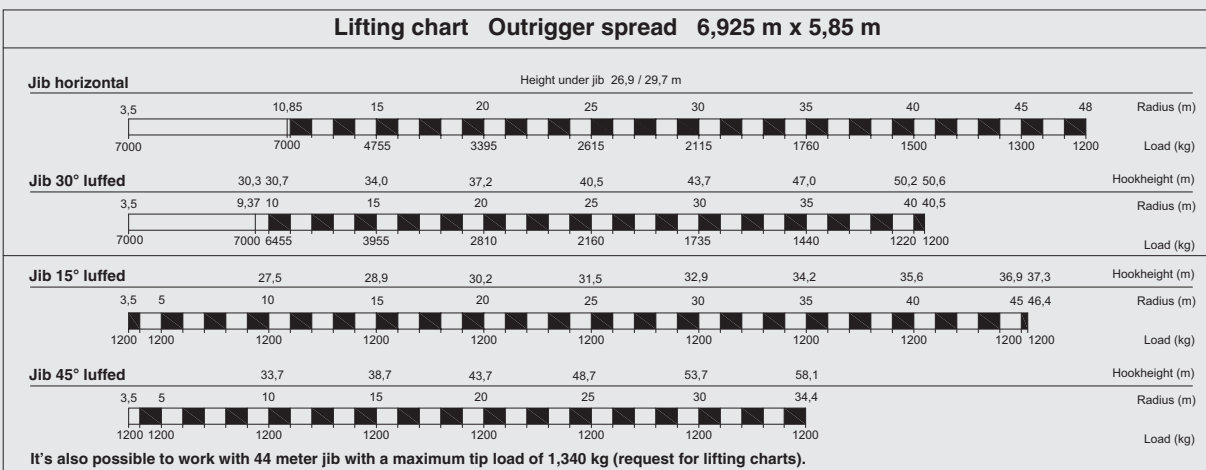
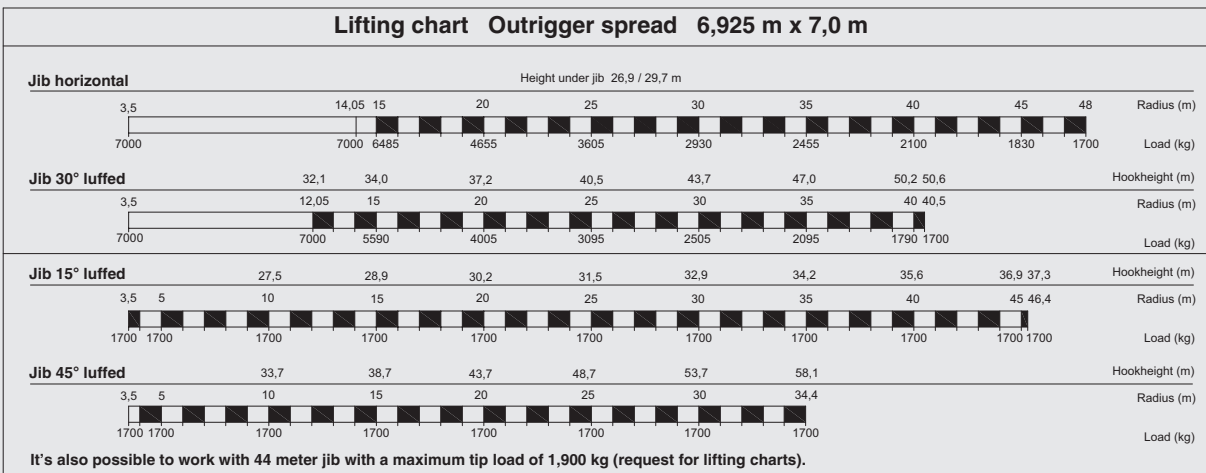


48.000 kg overall weight



SK 597-AT4

48 meter radius / 7,000 kg max. / 1,700 kg max. tip load



Changes subject to modifications

Lift to the max.

Spierings Mobile Cranes B.V.
 Merwedestraat 15
 5347 KZ Oss - The Netherlands
 PO Box 24, NL-5340 AA Oss

T +31(0) 412 69 77 77
 F +31(0) 412 67 12 20
 E sales@spieringscranes.com

 **SPIERINGS**
 MOBILE CRANES

Your flexibility to the max

8



Upper engine

With the newest emission regulations Spierings still chooses for two engines. The John Deere 4 Cylinder diesel engine (constant rpm) is mounted in the super structure. The engine and the hydraulic pumps are mounted in a high quality sound reducing cover.



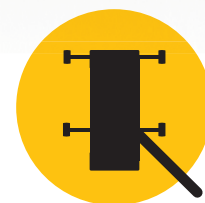
Truck cabin

The Spierings Crane is equipped with the latest design of interior. The new cab design is ergonomic and gives the driver optimum comfort. The driver's seat is equipped with air suspension. Air-conditioning, navigation, radio, Bluetooth car kit and heated and adjustable mirrors are standard.



One job, one man

One operator can easily erect and operate the crane. No additional ballast or jib sections are required. A Spierings crane can at all times be operated by one operator. The operator has a perfect view out of the crane cab and with the optional mounted trolley camera even in the most difficult situations.



Truck

Specially designed truck chassis for optimum torsion rigidity. As a result of the special construction, the maximum lifting capacity can be reached with minimum ballast, thus making extra ballast unnecessary.



Hydraulic motions

All crane motions are hydraulic proportional controlled. This makes the crane easy to operate and gives maximum precision and efficiency.



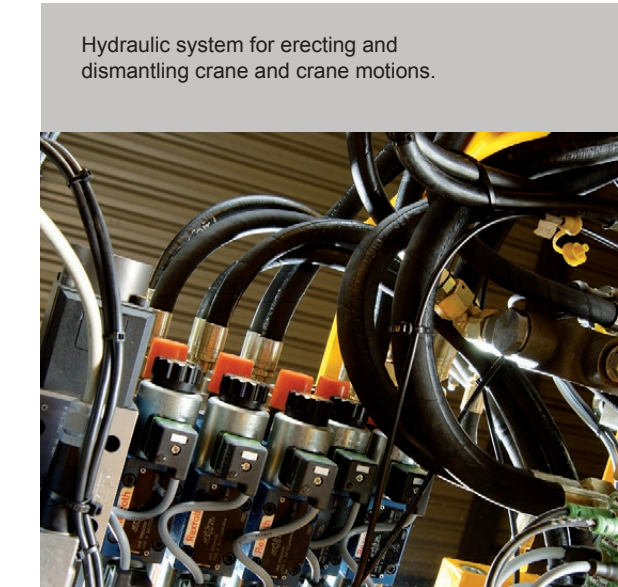
Steel pads

The crane is optional equipped with 4 steel pads (2x0,9 meter), mounted at the rear of the carrier. An auxiliary crane arm is fit for placing the steel pads.



Setup in minutes

The fully automatic program to erect the Spierings Crane takes approx 8 minutes after the crane is set on its outrigger.



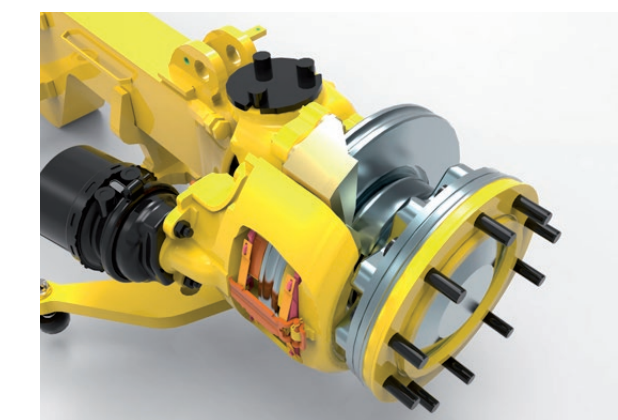
Hydraulic system for erecting and dismantling crane and crane motions.



Crane Cabin equipped with trolley camera display and touch screen.



Four floodlights are mounted in the jib and tower.



Disc brakes, interarder and exhaust brake are standard.



The new truck cab interior design is fully equipped and gives the driver optimum comfort.