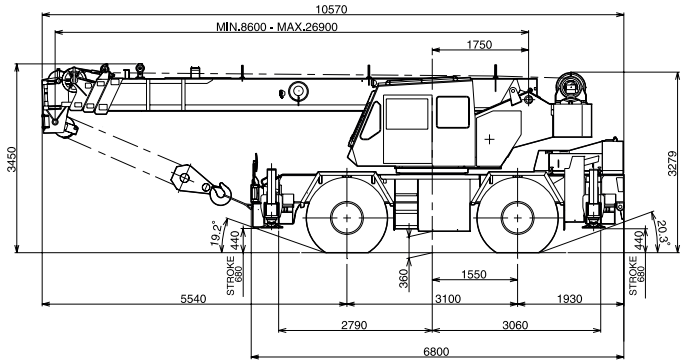
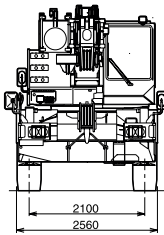
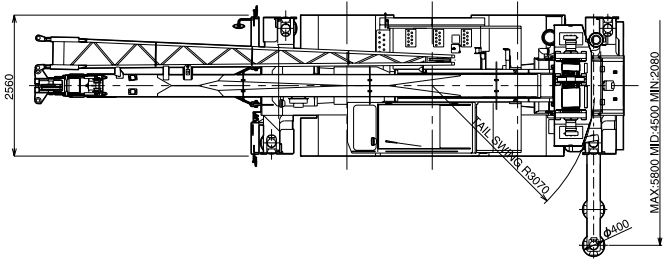
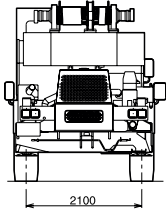
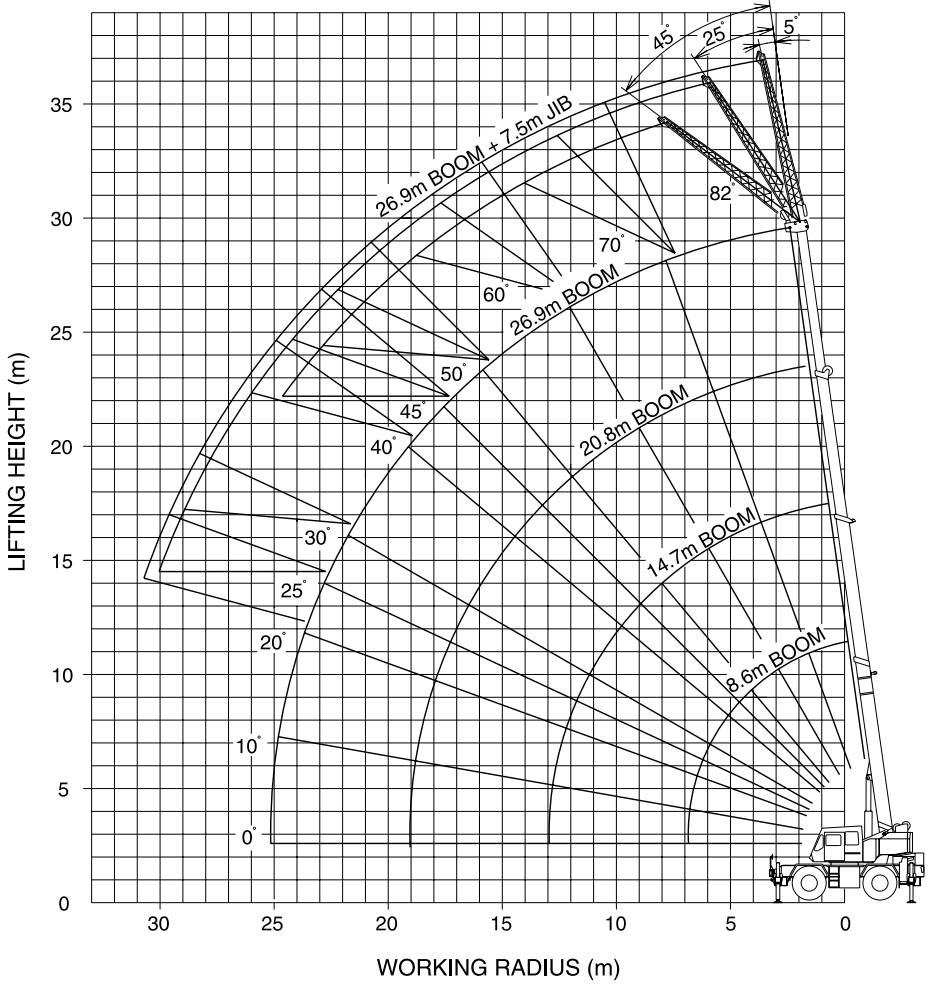


## DIMENSION

SPEC. SHEET No. TR-250E-3-00102/EX-23





## RATED LIFTING CAPACITIES ISO4305

SPEC. SHEET No. TR-250E-3-00102/EX-23

### ON OUTRIGGERS

Unit : kg

		Outriggers fully extended (5.8 m) 360° Rotation									
B \ A	8.6	14.7	20.8	26.9	C	26.9 m Boom + 7.5 m Jib					
						5° offset		25° offset		45° offset	
						B	W	B	W	B	W
3.0	25,000	16,500			80°	6.1	3,000	8.2	2,000	10.3	1,500
3.5	20,000	16,500	10,000		75°	9.5	3,000	11.3	2,000	13.2	1,500
4.0	18,500	16,500	10,000	7,000	70°	12.6	2,850	14.3	2,000	16.0	1,400
4.5	16,500	15,100	10,000	7,000	65°	15.3	2,350	16.9	1,800	18.4	1,300
5.0	15,000	14,000	10,000	7,000	60°	17.9	1,950	19.4	1,600	20.8	1,250
5.5	13,700	13,000	10,000	7,000	55°	20.3	1,700	21.7	1,400	22.9	1,200
6.0	12,500	12,000	9,600	7,000	50°	22.5	1,350	23.8	1,250	24.8	1,150
6.5	11,500	11,200	9,200	7,000	45°	24.5	1,000	25.6	900	26.3	800
7.0		10,000	8,700	7,000	40°	26.3	800	27.3	700		
8.0		8,000	7,800	6,700	35°	28.0	650	28.7	550		
9.0		6,500	7,000	6,250	30°	29.4	500	29.9	400		
10.0		5,450	5,700	5,600	25°	30.6	400	30.9	300		
11.0		4,550	4,800	5,000	20°	31.5	300				
12.0		3,800		4,150							
13.0				3,600							
14.0				3,150							
15.0				2,750							
16.0				2,400							
17.0				2,100							
18.0				1,850							
19.0				1,550							
20.0											
22.0											
24.0											
25.0											

Unit : kg

		Outriggers middle extended (4.5 m) Over side									
B \ A	8.6	14.7	20.8	26.9	C	26.9 m Boom + 7.5 m Jib					
						5° offset		25° offset		45° offset	
						B	W	B	W	B	W
3.0	25,000	16,500			80°	6.1	3,000	8.2	2,000	10.3	1,500
3.5	20,000	16,500	10,000		75°	9.5	3,000	11.3	2,000	13.2	1,500
4.0	18,500	16,500	10,000	7,000	70°	12.6	2,850	14.3	2,000	16.0	1,400
4.5	16,500	15,100	10,000	7,000	65°	15.2	2,000	16.9	1,700	18.4	1,300
5.0	13,700	13,000	10,000	7,000	60°	17.6	1,350	19.2	1,200	20.7	1,100
5.5	11,500	10,900	10,000	7,000	55°	19.9	900	21.4	800	22.6	750
6.0	9,800	9,300	9,600	7,000	50°	22.1	600	23.4	1500	24.4	500
6.5	8,450	8,050	8,850	7,000							
7.0		7,000	7,750	7,000							
8.0		5,500	6,050	6,450							
9.0		4,350	4,900	5,250							
10.0		3,500	4,050	4,350							
11.0		2,850	3,350	3,650							
12.0		2,300	2,750	3,050							
13.0			2,250	2,550							
14.0			1,850	2,150							
15.0			1,550	1,800							
16.0			1,300	1,550							
17.0			1,050	1,300							
18.0			850	1,050							
19.0			700	900							
20.0				700							

A : Boom length (m)

B : Load radius (m)

C : Boom angle

W : Rated lifting capacity

## RATED LIFTING CAPACITIES ISO4305

SPEC. SHEET No. TR-250E-3-00102/EX-23

### ON OUTRIGGERS

Unit : kg

Outriggers extended to minimum(2.08 m)				
Over side				
A \ B	8.6	14.7	20.8	26.9
3.0	10,200	9,800		
3.5	8,000	7,650	8,500	
4.0	6,500	6,150	6,900	7,000
4.5	5,350	5,050	5,700	5,950
5.0	4,450	4,150	4,800	5,100
5.5	3,750	3,500	4,050	4,350
6.0	3,200	2,900	3,500	3,750
6.5	2,700	2,450	3,000	3,250
7.0		2,050	2,600	2,850
8.0		1,400	1,900	2,150
9.0		900	1,350	1,600
10.0			950	1,150
11.0				850

A : Boom length (m)

B : Load radius (m)

## RATED LIFTING CAPACITIES ISO4305

SPEC. SHEET No. TR-250E-3-00102/EX-23

### ON TIRES

Unit : kg

B \ A	Stationary						B \ A	Creep					
	Over front			360°				Over front			360°		
	8.6	14.7	20.8	8.6	14.7	20.8		8.6	14.7	20.8	8.6	14.7	20.8
3.0	15,000	10,000		9,200	8,000		3.0	11,000	8,000		7,000	5,200	
3.5	13,500	10,000		7,000	7,200	6,000	3.5	10,500	8,000	6,000	6,200	5,200	3,800
4.0	11,000	10,000	7,000	6,000	5,600	5,000	4.0	9,500	8,000	6,000	5,100	4,700	3,800
4.5	9,100	8,300	7,000	4,900	4,500	4,500	4.5	8,000	7,200	6,000	4,100	3,800	3,800
5.0	8,000	7,200	6,500	4,000	3,700	4,100	5.0	6,900	6,200	6,000	3,300	3,100	3,300
5.5	6,900	6,400	6,000	3,400	3,200	3,500	5.5	5,900	5,500	5,200	2,700	2,600	2,800
6.0	6,100	5,700	5,400	2,800	2,700	3,000	6.0	5,200	4,900	4,700	2,400	2,200	2,400
6.5	5,200	4,900	4,900	2,400	2,300	2,600	6.5	4,500	4,200	4,200	2,000	1,800	2,100
7.0		4,400	4,500		1,900	2,300	7.0		3,700	3,800		1,600	1,800
8.0		3,400	3,700		1,300	1,700	8.0		2,800	3,200		1,000	1,400
9.0		2,600	3,000			1,300	9.0		2,200	2,500			1,000
10.0		2,100	2,500				10.0		1,700	2,000			
11.0		1,700	2,000				11.0		1,400	1,700			
12.0		1,300	1,700				12.0		1,100	1,400			
13.0			1,400				13.0			1,100			
14.0			1,100										

A : Boom length (m)

B : Load radius (m)